

# Rutherford Engineering



The Morgan Specialists servicing spares repairs improvements restoration

## FAX MESSAGE

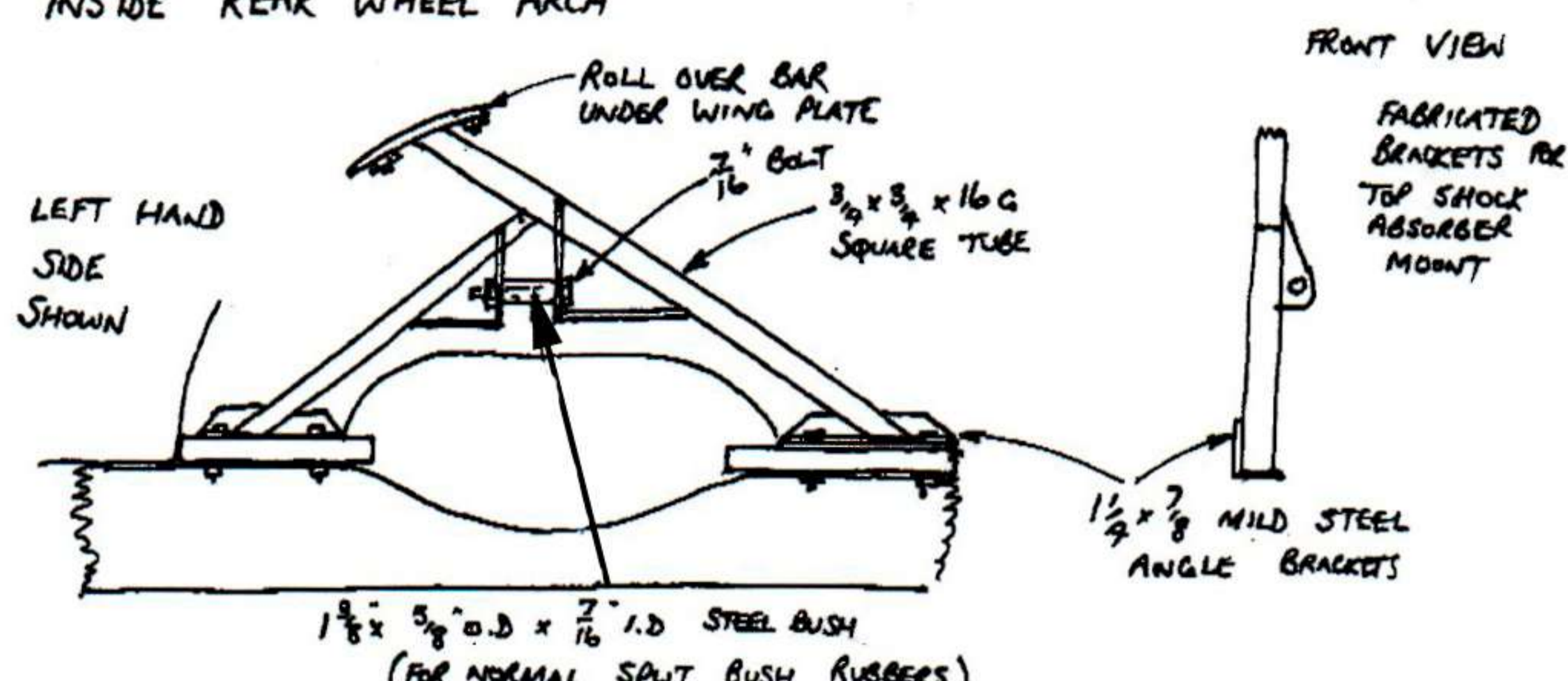
TO: LORNE GOLDMAN

FROM: DAVE RUTHERFORD

DATE: 16/8/01

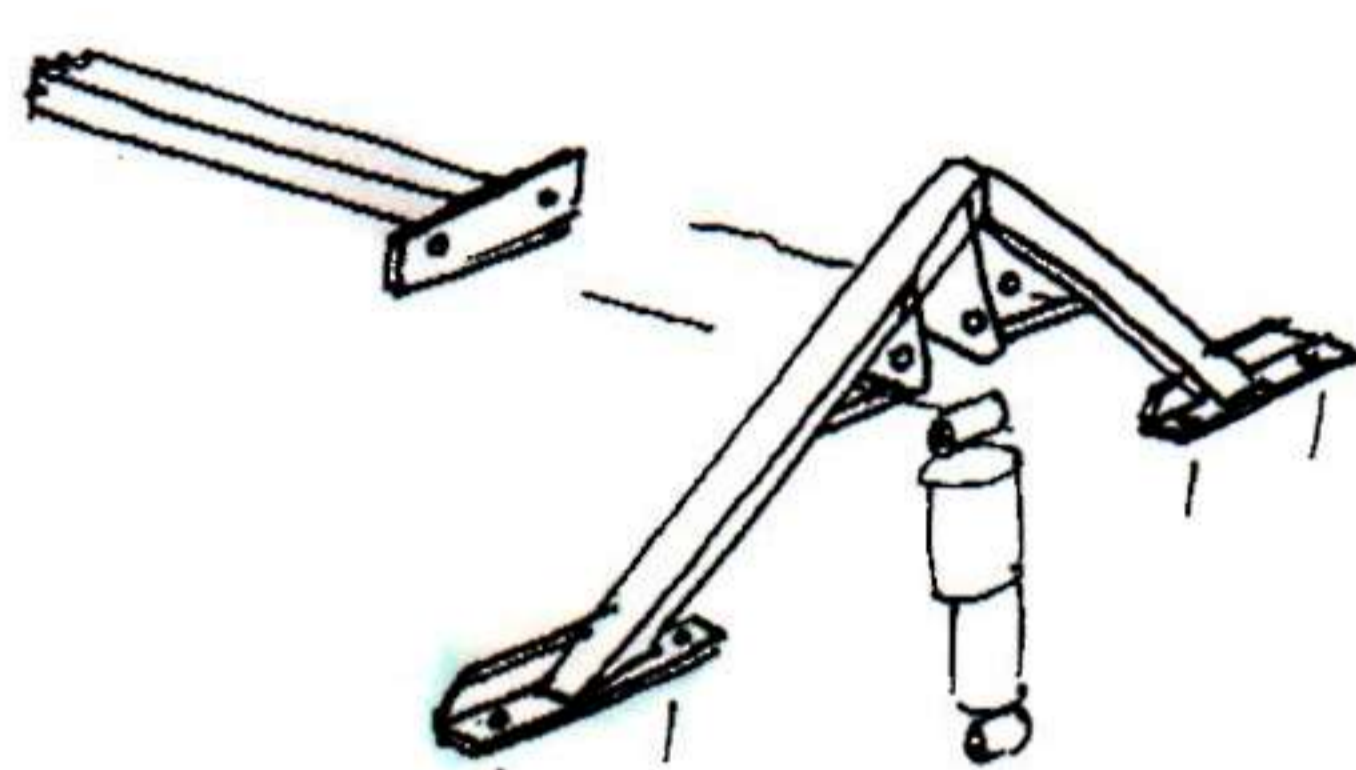
PAGES: 3

SKETCHES OF 'VERTICAL' REAR SHOCK ABSORBER MOUNTS TO FIT INSIDE REAR WHEEL ARCH



IF YOU DO NOT HAVE A ROLLBAR THE BRACKET COULD BE MORE OF A SIMPLE A FRAME, PERHAPS WITH A STEEL CROSS BAR BOLTED BETWEEN INSIDE FACES OF LUGGAGE COMPARTMENT FRAME

PAGES 2 & 3 ARE MY FITTING INSTRUCTIONS FOR THE TUBULAR KIT. THESE SHOW MY 3-BOLT FIXING FOR THE LOWER SHOCK MOUNTS  
SORRY ITS BEEN SO LONG BEFORE I HAD TIME TO MAKE THESE SKETCHES



D. J. Rutherford B.Sc.(Engineering)

Pickle Farm

# Rutherford Engineering



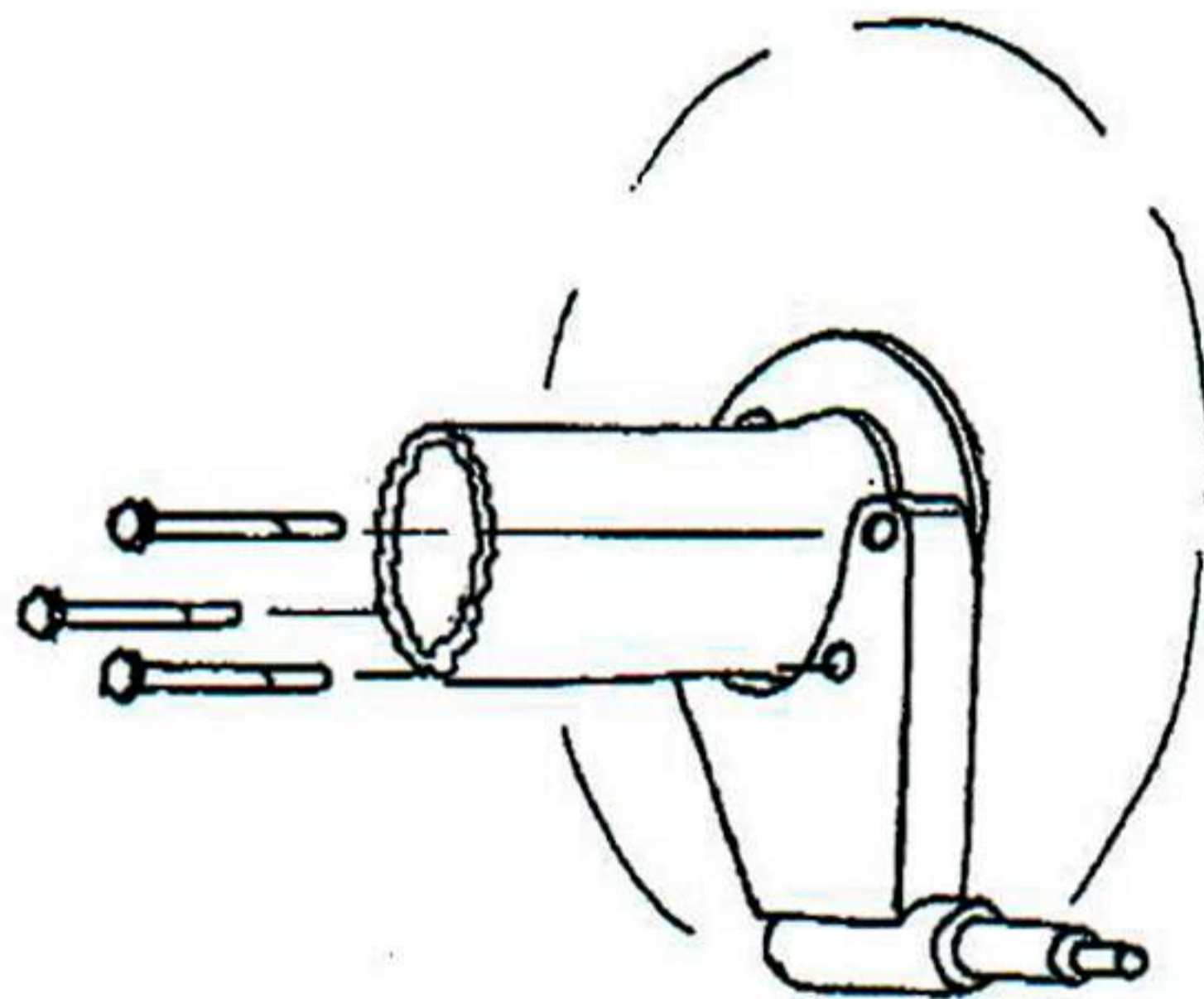
The Morgan Specialists servicing spares repairs improvements restoration

## REAR TELESCOPIC SHOCK ABSORBER CONVERSION KIT (TUBULAR)

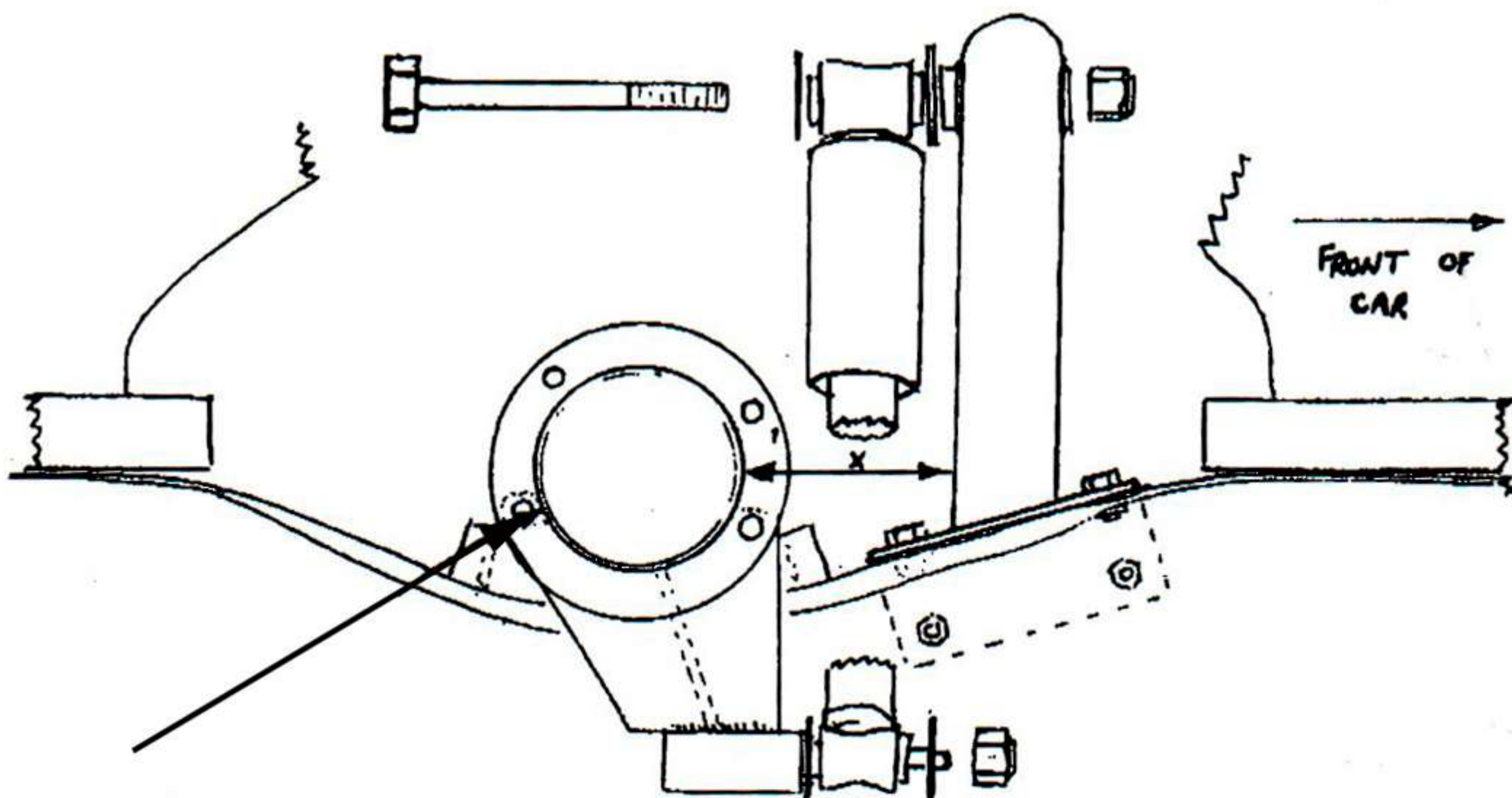
PLUS 8 AND PLUS 4 WIDE TRACK

### FITTING INSTRUCTIONS

1. Raise the car, support securely under the chassis and remove the rear wheels.
2. Remove the lever arm shock absorbers complete with mounting plates and connecting links. If desired, change the two inner U-bolts for plain items.
3. Remove the rear brake drums, brake shoes and springs, and remove the lower two and top front rear hub bearing retaining bolts.
4. Bolt the axle brackets in place with the shock absorber bolt extending forward.



5. Position the tubular crossbar on the chassis in front of the axle approximately as shown. Ascertain the final position of the crossbar by checking that the shock absorbers are almost, but not fully, extended with the axle resting on the rebound rubbers. Move the crossbar forward up the slope of the chassis to increase the distance between the shock absorber mountings or vice versa. Ensure that the upper shock absorber body will not catch on the crosstube assembly when in use. Mark the chassis for four holes each side.



AXLE TUBE SHOWN WITHOUT BRAKE BACKPLATE, ETC.

DIMENSION X IS NOMINALLY 3" THE RANGE OF POSITIONS WE HAVE USED IS FROM 2 3/4" TO 3 5/8"