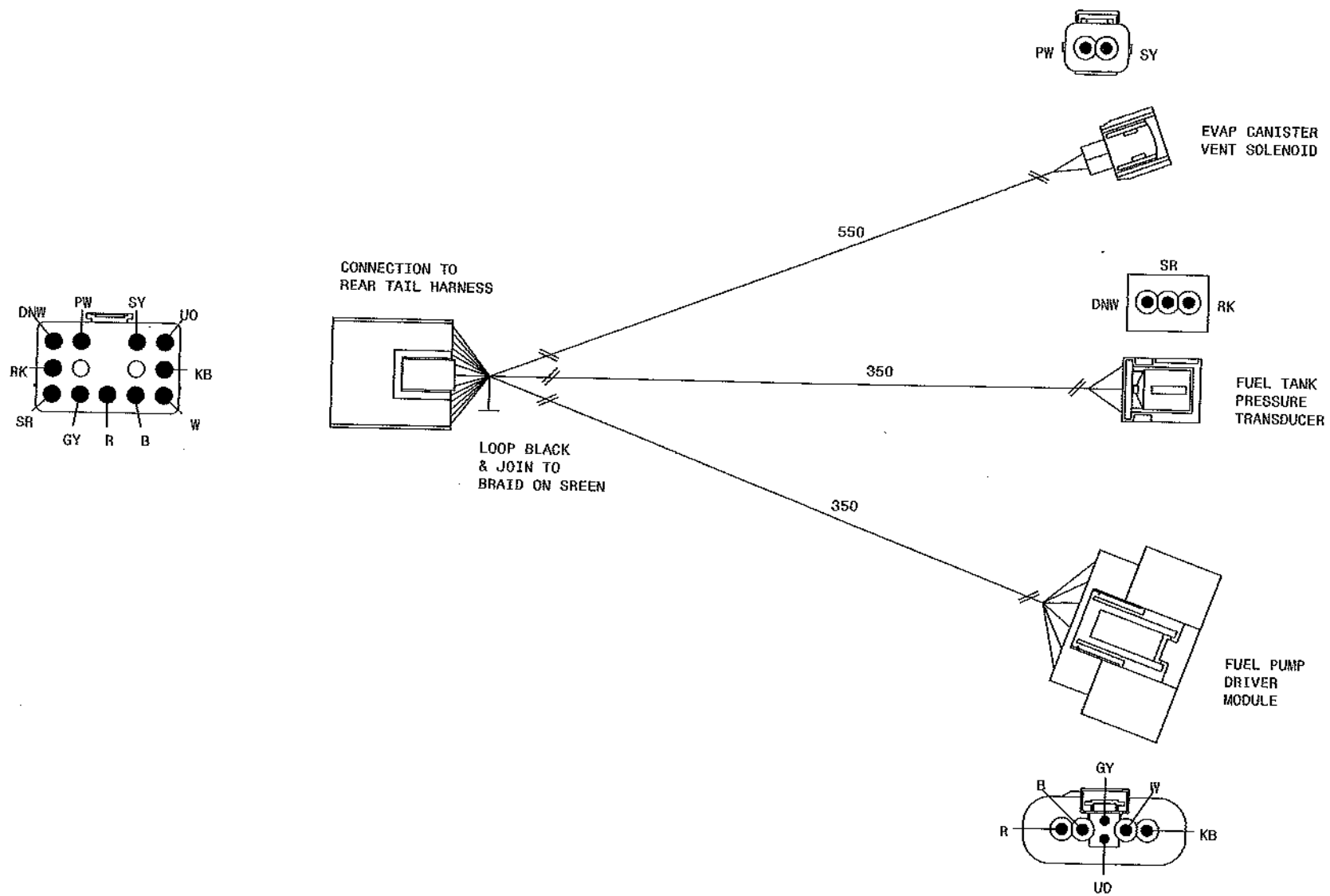
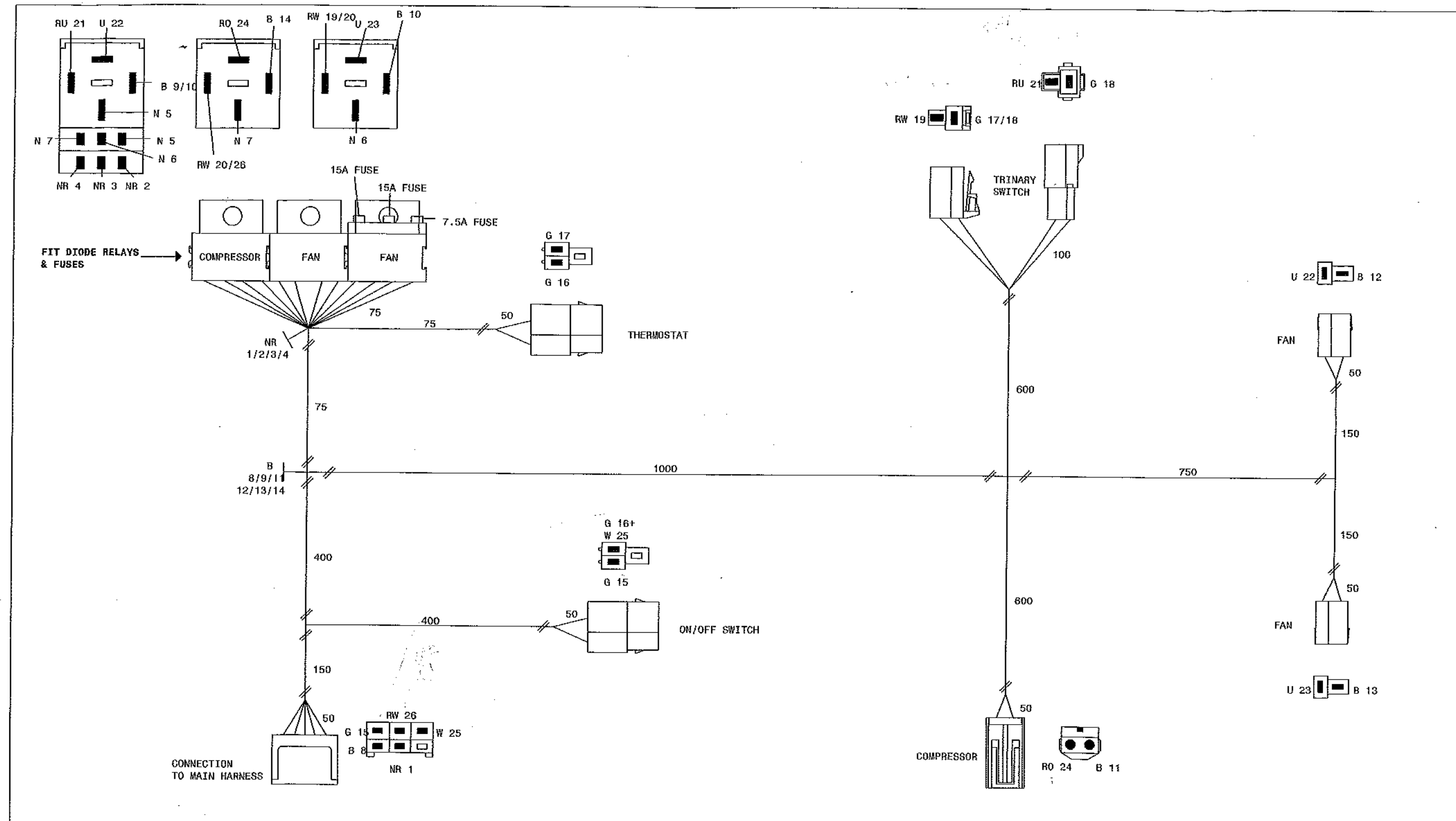


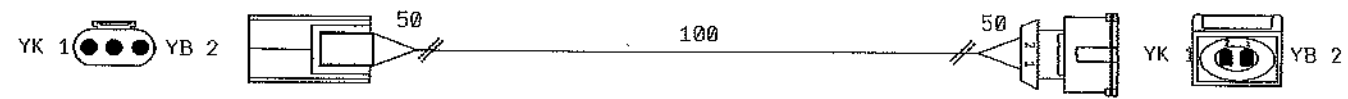
Letter	Revision Description	Date Drawn	Date Approved	Drawn	Date	Checked	Date	Approved	Date	Scale
A	Extend Running Light breakout	30/03/05	05/04/05	C.J.B.	30/03/05					NTS
								MORGAN MOTOR CO.		
								V6 FORD FEDERAL REAR HARNESS(MEH 1242)		
								ALL DIMENSIONS IN MM		
								MOULDINGS VIEWED FROM CABLE ENTRY		
								M.E.S. Ltd		Tel: 01926 499756
								Unit A2, Harris Road		Fax: 01926 410327
								Wedgnock Ind Est		Drawing No.
								Warwick.		3100120 A
								CV34 5JU		



Letter	Revision Description	Date Drawn	Date Approved	Drawn C.J.B.	Date 18/07/05	Checked	Date	Approved	Date	Scale NTS
				MORGAN MOTOR CO.			M.E.S. Ltd		Tel: 01926 499756	
				V6 FORD FEDERAL REAR FUEL HARNESS(MEH)			Unit A2, Harris Road		Fax: 01926 410327	
				ALL DIMENSIONS IN MM			Wedgnock Ind Est		Drawing No.	
				MOULDINGS VIEWED FROM CABLE ENTRY			Warwick.		3100126	
							CV34 5JU			



Letter	Revision Description	Date Drawn	Date Approved	Drawn C.J.B.	Date 22/09/03	Checked	Date	Approved	Date	Scale NTS
				MORGAN MOTOR CO.			M.E.S. Ltd Unit A2, Harris Road Wedgnock Ind Est Warwick. CV34 5JU		Tel: 01926 499756 Fax: 01926 410327 Drawing No. 3100125	
				V6 FEDERAL AIR CON HARNESS (MEH 0976)						
				ALL DIMENSIONS IN MM						
				MOULDINGS VIEWED FROM CABLE ENTRY						

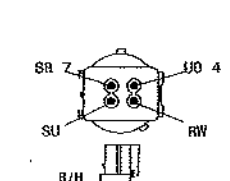
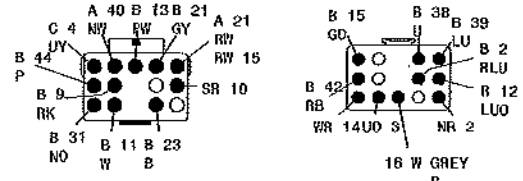
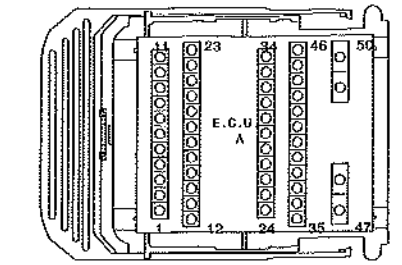


Letter	Revision Description	Date Drawn	Date Approved	Drawn C. J. B.	Date 01/07/05	Checked	Date	Approved	Date	Scale NTS
				MORGAN MOTOR CO.			M. E. S. Ltd		Tel: 01926 499756	
				V6 VEHICLE SPEED SENSOR SUB LOOM (MEH 1203)			Unit A2, Harris Road		Fax: 01926 410327	
				ALL DIMENSIONS IN MM			Wedgnoock Ind Est		Drawing No.	
				MOULDINS VIEWED FROM CABLE ENTRY			Warwick. CV34 5JU		3100123	

- 1 = LGW 12 = RW 24 = WK 35 = GP 47 =
- 2 = LN 13 = DNY 25 = UO 36 = LGY 48 = YLU
- 3 = LNB 14 = 26 = KR 37 = RK 49 = RW
- 4 = DNU 15 = LGR 27 = NK 38 =
- 5 = W 16 = SO 28 = LQW 39 = WU
- 6 = 17 = 29 = 40 = HW
- 7 = DMW 18 = 30 = SLU 41 = SH
- 8 = 19 = SW 31 = 42 =
- 9 = 20 = 32 = 43 =
- 10 = 21 = RW 33 = 44 = SR
- 11 = 22 = OY 34 = BR 45 = SY
- 23 = UR 46 =

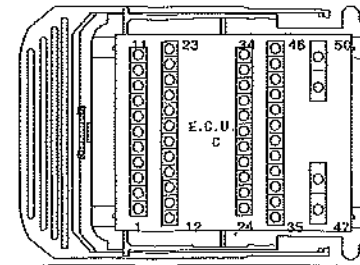
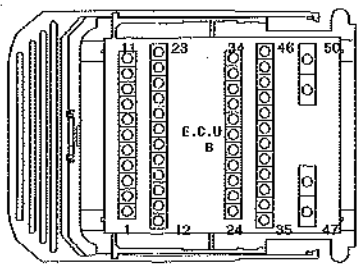
- 1 = DNY 9 = LHB
- 2 = LN 10 = LGO
- 3 = LGW 11 = OY
- 4 = WK 12 = DLAV
- 5 = DNLU 13 = WLU
- 6 = W 14 = SR
- 7 = KW 15 = LGY
- 8 = GP 16 = R

- 1 = 9 =
- 2 = DMW 10 = GW*
- 3 = RK 11 = RW
- 4 = B 12 = YLG
- 5 = WR 13 = BR
- 6 = 14 = SY
- 7 = 15 = UD
- 8 = DNG 16 = SW



* = NOT USED INSULATE AND TAPE INTO HARNESS

- 1 = 12 = LUO 24 = 35 = WR 47 = B
- 2 = RLU 13 = PW 25 = KY* 36 = WR 48 = B
- 3 = YLG 14 = 26 = BY* 37 = 49 = B
- 4 = 15 = GO 27 = OY* 38 = U 50 = DNLG
- 5 = 16 = 28 = 39 = LU
- 6 = 17 = 29 = 40 =
- 7 = LNR* 18 = 30 = 41 =
- 8 = LG* 19 = 31 = DNO 42 = RB
- 9 = RK 20 = KB 32 = UR 43 = LNU
- 10 = BW 21 = GY 33 = 44 = P
- 11 = W 22 = 34 = LGB 45 = RLG
- 23 = B 46 =



- 1 = 12 = 24 = RLG 35 = 47 = WB
- 2 = 13 = 25 = SLU 36 = 48 = WB
- 3 = 14 = 26 = 37 = 49 =
- 4 = UY 15 = WLU* 27 = LG* 38 = 50 =
- 5 = 16 = 28 = 39 =
- 6 = 17 = 29 = BR* 40 =
- 7 = 18 = 30 = 41 =
- 8 = 19 = 31 = 42 = OS*
- 9 = 20 = 32 = 43 = WY*
- 10 = 21 = 33 = 44 =
- 11 = PD* 22 = 34 = 45 =
- 23 = KB* 46 = PY*

Letter	Revision Description	Date Drawn	Date Approved	Drawn C.J.B.	Date 29/03/05	Checked	Date	Approved	Date	Scale NTS
MORGAN MOTOR CO.								M.E.S. Ltd Unit A2, Harris Road Wedgcock Ind Est Warwick.		
V6 FORD FEDERAL ENGINE HARNESS(MEH)										
ALL DIMENSIONS IN MM										
										Tel: 01926 499756 Fax: 01926 410327 Drawing No. 3100127