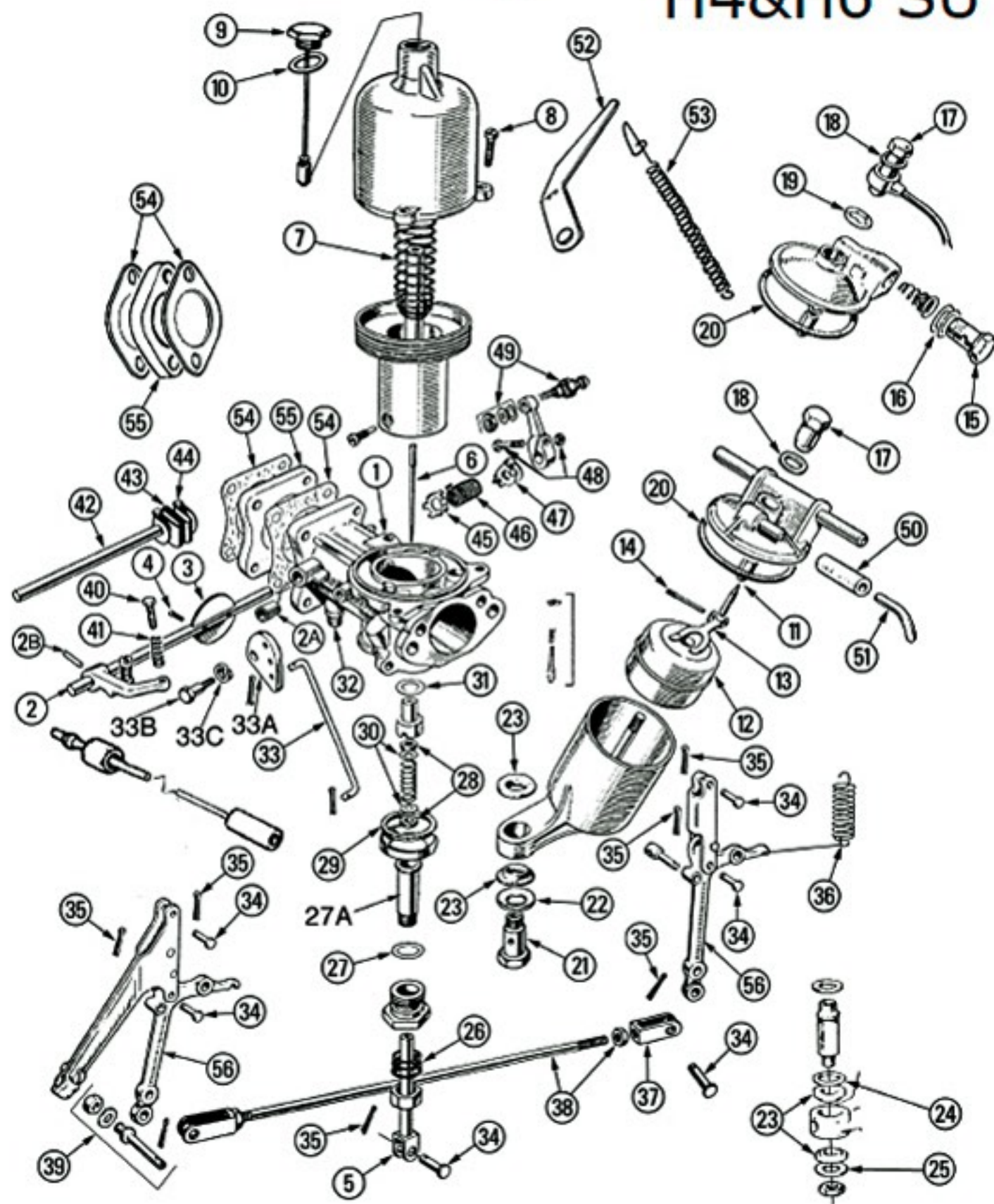


# Morgan Motors OF NEW ENGLAND



## H4&H6 SU



Line	Part#	Description	Qty.	Remarks				
1	300-800	Carb Rebuilt	2	H4 2 Bolt	27	300-882	Copper Washer	2
	300-801	Carb Rebuilt	2	H6 Screw Conn.	28	300-890	Cork Gland Washer	4
	300-802	Carb Rebuilt	2	H6 Push Conn.	29	300-885	Cork Washer	2
2	300-808	Throttle Shaft Std.	2	H4 2 Bolt	30	300-891	Brass Washer	4
	300-810	Throttle Shaft Std.	2	H6 4 Bolt	31	300-894	Copper Washer	2
	300-809	Throttle Shaft O/S	2	H4 2 Bolt	32	300-900	Vac. Fitting	1
	300-811	Throttle Shaft O/S	2	H6 4 Bolt	33	300-904	Link	1
2A	300-812	Bushing	4	Use when carb bodies are worn	33A	300-901	Fast Idle Cam	1
					33B	300-902	Pivot Bolt	1
					33C	300-903	Spring Washer	1
2B		Roll Pin			34	300-958	Clevis Pin	7
3	300-813	Throttle Disc	2		35	200-862	Cotter Pin	8
4	300-814	Disc Screw	4		36	300-949	Spring	2
5	300-815	Jet	2	H4 2 Bolt .090	37	300-954	Clevis End	2
	300-816	Jet	2	H6 4 Bolt .100	38	300-953	Rod & Nuts	1
6	300-817	Needle	2	H4 2 Bolt (FV)	39	300-963	Choke Pin Assy	1
	300-818	Needle Std.	2	H6 4 Bolt (SM)	40	300-925	Screw	3
	300-819	Needle Lean	2	H6 4 Bolt (SL)	41	300-926	Spring	3
	300-820	Needle Rich	2	H6 4 Bolt (RH)	42	300-907	Connecting Shaft	1
7	300-825	Spring	2	H4 2 Bolt	43	300-908	Spring Coupling	2
	300-826	Spring	2	H6 4 Bolt	44	300-909	Bolt/Washer/Nut	4
8	300-830	Dome Screw	6		45	300-912	Anchor Plate	2
9	300-833	Damper	2		46	300-913	Spindle Spring	2
10	300-832	Fibre Washer	2		47	300-914	Clip	2
11	300-835	Needle & Seat	2			300-909	Clip Bolt	2
12	300-836	Float	2		48	300-920	Bolt/Washer/Nut	1
13	300-837	Float Lever	2		49	300-921	Cable Connector	1
14	300-838	Lever Pin	2		50	300-995	Hose	2
15	300-842	Banjo Bolt	2		51	300-996	Vent Pipe	2
16	300-843	Fibre Washer	4		52	300-922	Bracket	1
17	300-848	Lid Bolt	2		53	300-923	Spring	1
	300-859	Lid Bolt	2		54	300-974	Gasket	4 4 Bolt
18	300-849	Alloy Washer	2			300-972	Gasket	4 2 Bolt
19	300-852	Fibre Washer	2		55	300-975	Insulating Block	2 4 Bolt
20	300-863	Lid Gasket	2			300-973	Insulating Block	2 2 Bolt
21	300-871	Banjo Bolt	2		56	300-947	Arm Front and Rear	2 4 Bolt
22	300-872	Dished Washer	2					
23	300-869	Rubber Grommet	4					
24	300-870	Fibre Washer	2					
25	300-868	Fibre Washer	2					
26	300-878	Spring	2					