



No.:	CV 0004
Date:	15 February 2008
BU:	CV
Page:	1 of 1

New Range Tubular Tank Unit Senders

Dear Customer,

We have expanded our tubular tank unit sender's range to cover fuel tanks depth from 160mm to 810mm.



Author: Flavio Alessio
Company: Continental Corporation 2 Scholar Drive, Bundoora Vic 3083 Ph 1 800 335 282

Tubular tank unit sender's, new range

Part Number	Sender Length	Pitch Circle Diameter	Cut-out Diameter	Resistance at Full (Ω)	Resistance at Empty (Ω)
224011000015G	150mm	54mm	41mm	4.5	69
224011000016G	160mm	54mm	41mm	4.5	74
224011000017G	170mm	54mm	41mm	4.5	79.5
224011000018G	180mm	54mm	41mm	3	64
224011000019G	190mm	54mm	41mm	3	68
224011000020G	200mm	54mm	41mm	3	68
224011000021G	210mm	54mm	41mm	3	76
224011000022G	220mm	54mm	41mm	3	80
224011000023G	230mm	54mm	41mm	3	84
224011000024G	240mm	54mm	41mm	3	65.5
224011000025G	250mm	54mm	41mm	2.5	72
224011000026G	260mm	54mm	41mm	2.5	72
224011000027G	270mm	54mm	41mm	2.5	74.5
224011000028G	280mm	54mm	41mm	2.5	75.5
224011000029G	290mm	54mm	41mm	2.5	78
224011000030G	300mm	54mm	41mm	2.5	82.8
224011000031G	310mm	54mm	41mm	2.5	84
224011000032G	320mm	54mm	41mm	2.5	69.5
224011000033G	330mm	54mm	41mm	2.5	72
224011000034G	340mm	54mm	41mm	2.5	74
224011000035G	350mm	54mm	41mm	2.5	79.6
224011000036G	360mm	54mm	41mm	2.5	69
224011000037G	370mm	54mm	41mm	2.5	71
224011000038G	380mm	54mm	41mm	2.5	73
224011000039G	390mm	54mm	41mm	2.5	75
224011000040G	400mm	54mm	41mm	2.5	74.9
224011000045G	450mm	54mm	41mm	2.5	84.3
224011000050G	500mm	54mm	41mm	2.5	75.4
224011000055G	550mm	54mm	41mm	2.5	77.6
224011000060G	600mm	54mm	41mm	2.5	85.3
224011000065G	650mm	54mm	41mm	2.5	82.2
224011000070G	700mm	54mm	41mm	2	81.6
224011000075G	750mm	54mm	41mm	2	82
224011000080G	800mm	54mm	41mm	2	68.5

Tubular Type Fuel Level Sensors

Tubular type fuel level sensors with flange, hole circle dia. 54mm

The sensor is installed in a mounting hole made in the tank at a good position for fuel measurement, or on a mounting flange provided by the tank manufacturer, or in an existing mounting hole.

Tubular type fuel level sensor with flange, hole circle dia. 54 mm

This metal sensor (6 V to 24 V, negative earth) is available in different lengths.

Accessories:

screw-fixation tank flange with sealing and mounting parts
or
weld-type tank flange,
sealing,
mounting parts.

Tubular type fuel level sensor with special flange

This metal sensor (6 V to 24 V, negative earth or insulated earth) with special flange (bayonet flange, thread flange or special type flange) is available in different lengths.

Prior to installation remove the adhesive tape on the dip tube and the float retaining pin.



Tubular Type Fuel Level Sensors

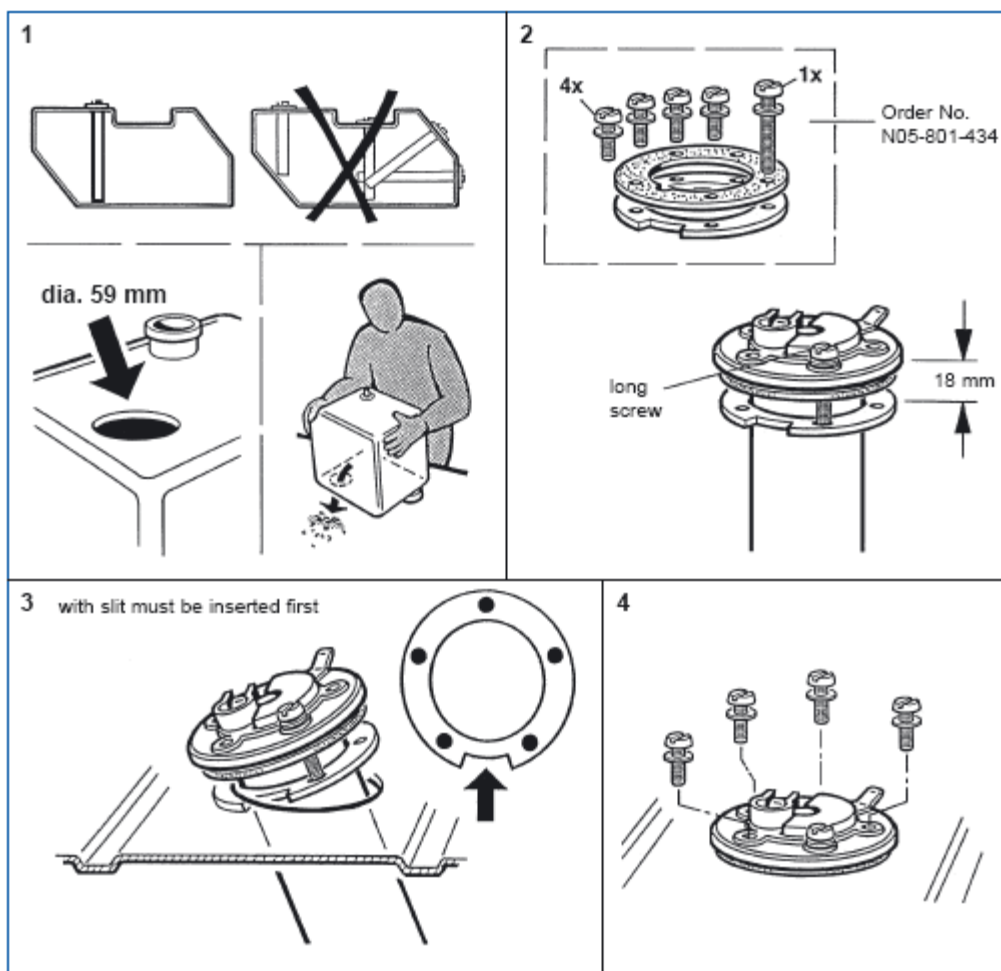
Installation information for tubular type sensor (flange hole circle dia. 54 mm) with a tank flange for screw fitting

If an installation opening must be made, the tank must be completely drained first. Place the fuel into an approved container.

Comply with the safety instructions of the automobile manufacturer for any work performed under the automobile.

Risk of explosion exists due to presence of residual gases in the tank!
Make sure that the tank is aired sufficiently (approx. 10 minutes).

Make a preliminary hole in the installation opening using a drill and then finish the hole using a compass saw or piercing saw.
Comply with the safety instructions of the tool manufacturer.
Clean the tank of residue from the drilling or sawing work.

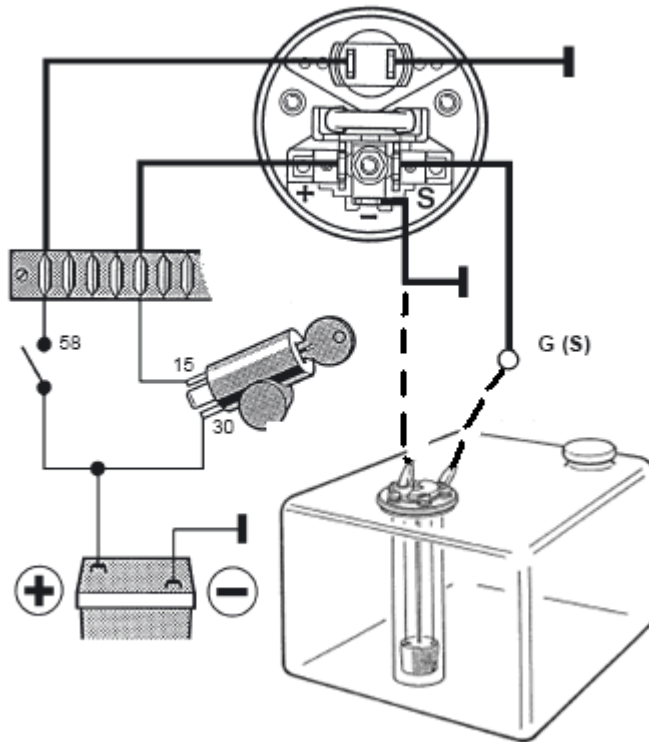


Wiring Diagram & Calibration Instructions

Electric Fuel Level Gauge

(Tubular Type Fuel Level Sensor)

Connect fuel sender to gauge



Gauge Calibration

The gauge is adjustable at empty, between 60 and 90 Ohms (See tank unit chart on page 2).

Turn the adjustment, carefully, clockwise or anticlockwise until the fuel gauge pointer is reading "0", with an "empty" tank.

